

Bowl-Tronics Enterprises Incorporated

Address: 1115 Sherwood Ave
Elgin IL. 60120

Phone: 847-741-4500

Website: www.bowl-tronics.com
E-mail: rick@bowl-tronics.com

Brunswick Pinsetter Saver Motor Control (PS-1)

BRC Pinsetter Saver Motor Control Theory

When the machine is first turned on the (PS-1) will keep the motor off until the micro switch on the 4 to 1 housing is activated or the new reset button is pushed. The LED will be lit when the machine is not running and is in standby mode. The motor shut off time is set by the potentiometer. The time decreases when you turn it in a clockwise rotation. The time adjustment is from 3 to 5 minutes.

Installation Instructions

Remember to remove power before performing any installation!!

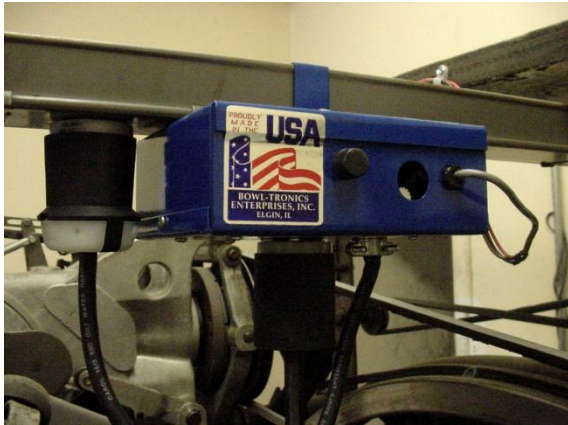
The (PS-1) mounts on the wire channel as shown in the photo (Fig. 1) on back page. Position the PS-1 just behind the motor plug on the wire channel. Run the switch cable along the back of the catwalk using the cable clamps provided to fasten the cable. Mount the reset switch and standby LED on the back of the catwalk close to the mechanics reset button as shown in the photo (Fig. 2) on back page. Mount the micro switch on the 4 to 1 housing as shown in the photo (Fig. 3) on back page. Make sure that the switch lever is under the clutch lever assembly and that the switch lever is fully depressed when the machine is at 0 degrees. Don't allow the switch lever to bend down more than it should. You should adjust it so the switch lever just closes the switch. You may have to adjust the lever and carefully bend it so that when the machine is running the switch lever isn't being hit by the clutch lever. If you don't you could have premature switch failure. Remove the motor plug from the wire channel and plug the motor into the (PS-1). Plug the (PS-1) into the motor plug socket in the wire channel. Turn power back on and test.

For repair visit: www.bowl-tronics.com/service

Fill out our service request form and ship to the address that is shown.

Notes:

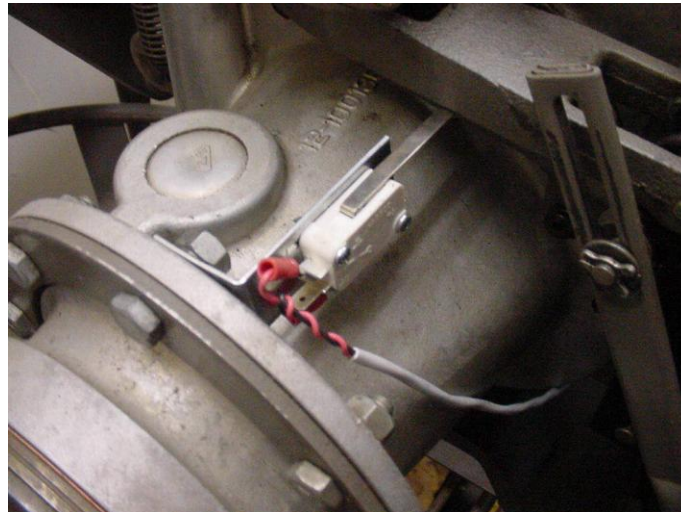
Brunswick Pinsetter Saver Motor Control Diagram



(Fig. 1)



(Fig. 2)



(Fig. 3)